

# SHOCK ABSORBERS

## Optional Shock Absorbers for Particular Products

### ● Shock Absorbers for AXIS Cylinders

#### Specifications

| Item \ Model                          | KSHAX6×5      | KSHAX7×5     | KSHAX8×6     | KSHAX10×8    | KSHAX12×10   |
|---------------------------------------|---------------|--------------|--------------|--------------|--------------|
| Applicable cylinder                   | XDA□16        | XDA□20       | XDA□25       | XDA□32       | XDA□40       |
| Maximum absorption J [ft·lbf]         | 1.5 [1.11]    | 2.0 [1.48]   | 2.9 [2.14]   | 6.9 [5.09]   | 11.8 [8.70]  |
| Absorbing stroke mm [in.]             | 5 [0.20]      | 5 [0.20]     | 6 [0.24]     | 8 [0.31]     | 10 [0.39]    |
| Maximum impact speed mm/s [ft./sec.]  | 700 [2.3]     |              |              |              |              |
| Maximum operating frequency cycle/min | 60            |              |              |              |              |
| Operating temperature range °C [°F]   | 0~60 [32~140] |              |              |              |              |
| Mass kg [oz.]                         | 0.018 [0.63]  | 0.033 [1.16] | 0.045 [1.59] | 0.084 [2.96] | 0.107 [3.77] |

#### Order Codes

KSHAX

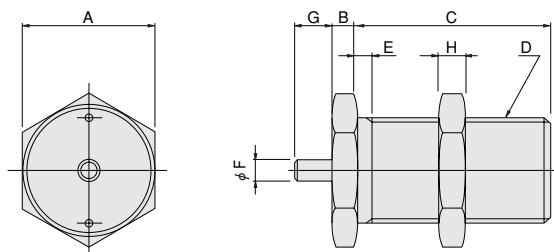


Piston dia. × absorbing stroke

6×5  
7×5  
8×6  
10×8  
12×8

Shock absorber for AXIS cylinder

#### Dimensions (mm)



| Code \ Model | A  | B | C  | D       | E   | F | G (Stroke) | H |
|--------------|----|---|----|---------|-----|---|------------|---|
| KSHAX6×5     | 14 | 3 | 19 | M12×1   | 1.5 | 3 | 5          | 3 |
| KSHAX7×5     | 17 | 3 | 26 | M14×1   | 2   | 3 | 5          | 4 |
| KSHAX8×6     | 19 | 3 | 28 | M16×1.5 | 2   | 3 | 6          | 4 |
| KSHAX10×8    | 22 | 3 | 37 | M20×1.5 | 2   | 5 | 8          | 4 |
| KSHAX12×10   | 24 | 3 | 40 | M22×1.5 | 2   | 5 | 10         | 4 |

**Caution:** For AXIS Cylinders, see the Actuators General Catalog.